

CIC Plus Series

Carbon Impregnated Cartridges

- ✓ Effective sediment, chlorine taste and odor reduction.
- ✓ Ideal for residential, commercial, light industrial and food service applications.
- ✓ Carbon Impregnated Filter Fibers for optimal performance.
- ✓ Superior performance and cost to benefit ratio.
- ✓ High dirt holding capacity.



HYDRONIX CIC PLUS SERIES CARBON IMPREGNATED CARTRIDGES

combine the benefits of a sediment filter with the chlorine taste and odor reduction characteristics of carbon block filters. They offer exceptional dirt holding performance and are ideal for a wide range of applications.

HYDRONIX CIC PLUS SERIES CARBON IMPREGNATED CARTRIDGES

offer the user a high performance alternative to carbon block filters and provide a great cost to benefit ratio. They are constructed with high grade FDA approved materials and demonstrate low pressure drop characteristics throughout the lifespan of the filter.

CIC PLUS SERIES SPECIFICATIONS						
	Part Number	Description	Case Quantity	Box Dimension (Inches)	Weight (lbs)	Weight (kgs)
2.75"	CIC-10PLUS	2.75" x 9 7/8" Carbon Impregnated Cartridge, 5M	20	15 x 12.6 x 10.6	14	6.4
	CIC-20PLUS	2.75" x 20" Carbon Impregnated Cartridge, 5M	20	15 x 12.6 x 21.25	24	10.9
4.5"	CIC-BB10PLUS	4.5" x 9 7/8" Carbon Impregnated Cartridge, 5M	9	15.4 x 15.4 x 11	14	24.5
	CIC-BB20PLUS	4.5" x 20" Carbon Impregnated Cartridge, 5M	6	16.4 x 11.8 x 22	16	22

WARNING: Do not use with water that is microbiologically unsafe or of unknown quality without adequate disinfection before or after the system.

NOTE: The granular activated carbon cartridges will contain a very small amount of carbon fines (very refined black powder). After installation, a new cartridge should be flushed with sufficient water to remove all traces of the fines from your water system before using the water. Each time you use your filtered water tap for drinking or cooking purposes it is recommended that you run (flush) the tap for at least 20 seconds prior to using water. This is particularly important if the water tap has not been used daily.

CIC PLUS SERIES

Carbon Impregnated Cartridges
Data Sheet

Materials of Construction

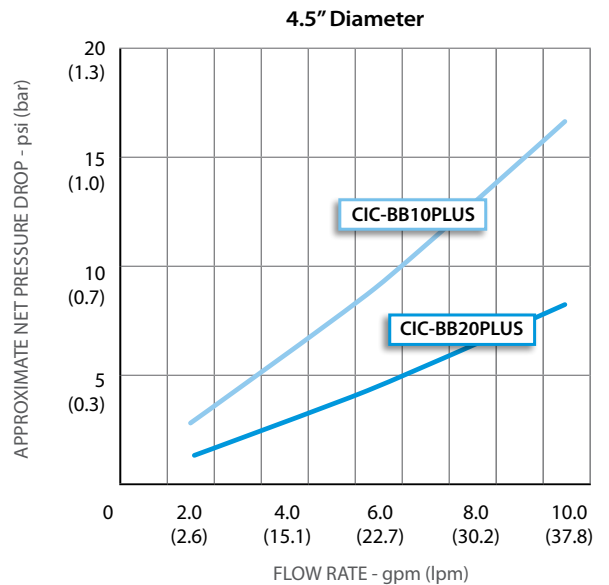
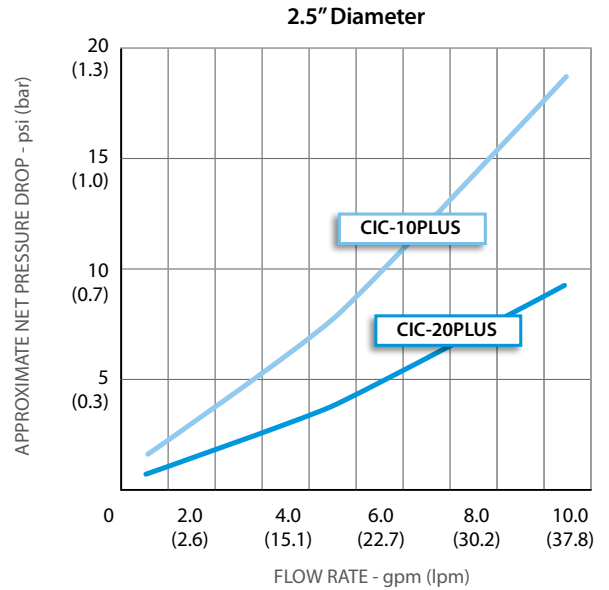
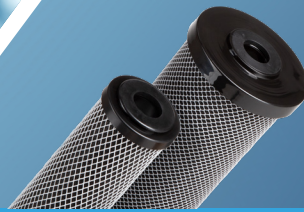
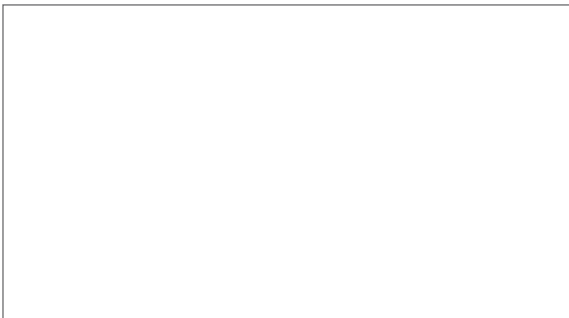
Filter media:	Carbon Impregnated Polypropylene Fiber Blend
End Caps:	Polypropylene
Gasket:	Buna-N
Netting:	Polypropylene

Specifications

Micron Rating:	5 μ
Temperature Range:	40 °F to 180 °F (4.4 °C to 82.2 °C)

CIC PLUS SERIES SPECIFICATIONS		
Item Number	Initial ΔP (psi) at Flow Rate (gpm)	Chlorine Taste & Odor Reduction at Flow Rate
CIC-10PLUS	1.6 psi at 1 gpm (0.11 bar at 3.8 L/min)	> 10,000 gallons at 1 gpm (37,800 liters at 3.8 L/min)
CIC-20PLUS	1.6 psi at 2 gpm (0.11 bar at 7.6 L/min)	> 20,000 gallons at 2 gpm (75,700 liters at 7.6 L/min)
CIC-BB10PLUS	2.5 psi at 2 gpm (0.17 bar at 7.6 L/min)	> 25,000 gallons at 2 gpm (94,600 liters at 7.6 L/min)
CIC-BB20PLUS	2.5 psi at 4 gpm (0.17 bar at 11.4 L/min)	>50,000 gallons at 4 gpm (189,000 liters at 15.2 L/min)

Distributed by:



JUST ADD WATER™

P.O. Box 2235 Chino Hills, CA 91709 | USA
sales@hydronixwater.com • www.HydronixWater.com